

Gas MaP Project

MPD11 - Shipper Estimated Read Request

Version 3.0

Approved

3rd November 2008

Market Process Definitions

1. Table of Contents

1.	Table of Contents	ii
2.	Revision History.....	ii
1.	Introduction.....	3
1.1	Scope	3
1.2	History of Changes	3
2	Market Process Map.....	4
3	Market Process Description.....	5
4	Supplementary Information.....	7
4.1	Validation Rules.....	7
4.2	Key Notes	8

2. Revision History

Version	Date	Revision Description
2.0	26/10/2006	Base-lined on the basis of CER approval on 04/10/2006
2.9	16/09/2008	Draft for approval – baselining for go-live
3.0	03/11/2008	Base-lined on the basis of CER Approval on 17/10/2008.

1. Introduction

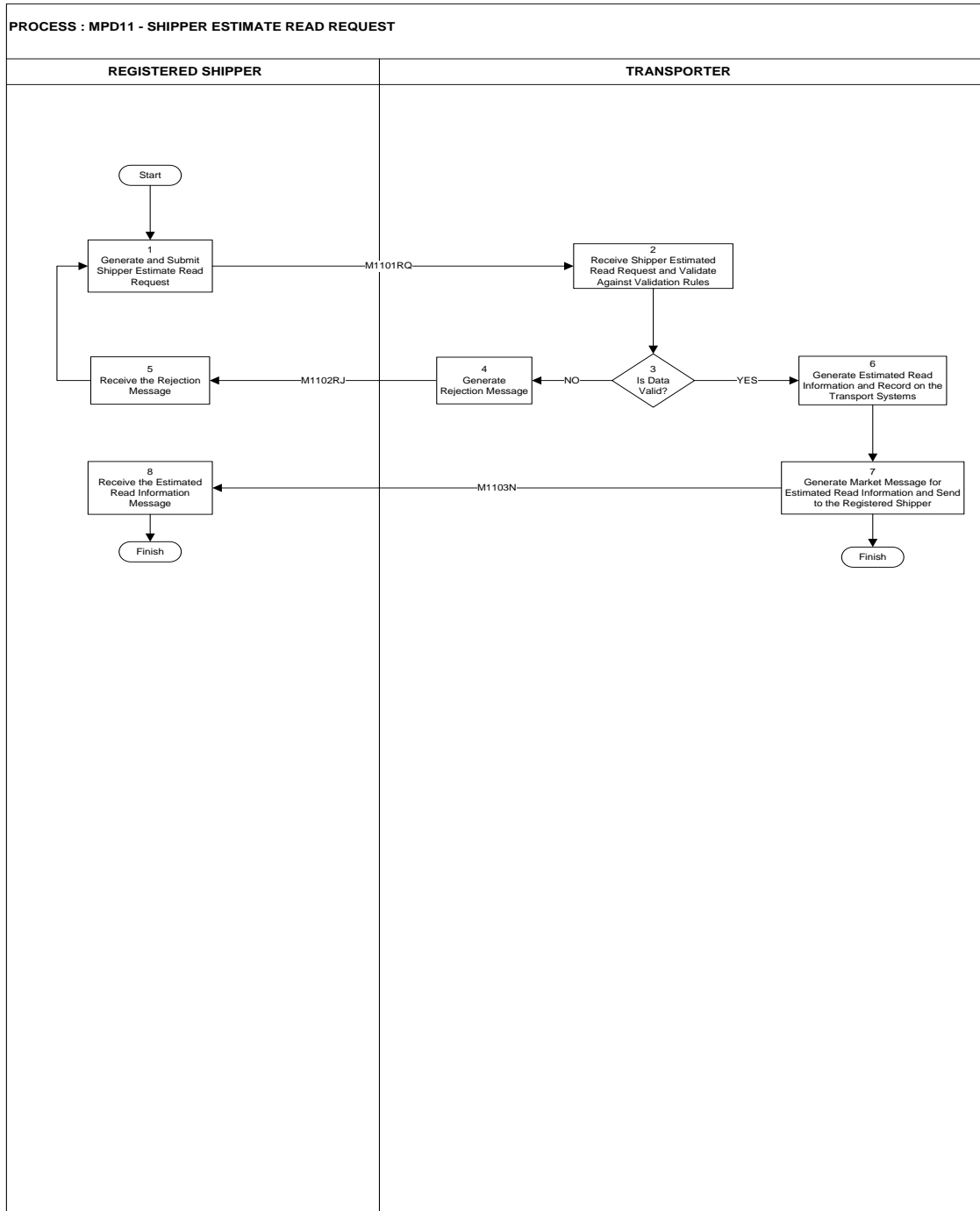
1.1 Scope

This process covers the automation of Shipper Estimate Read Request processing for Generic and Volume Corrected NDM Gas Points to which the requesting Shipper is registered.

1.2 History of Changes	
Source of Changes	Description of Change
CR021	Baselined for go-live and changes made in line with Change Request 021

Market Process Definitions

2 Market Process Map



Market Process Definitions

3 Market Process Description			
Step	Role	Actions	Interfaces
1	Shipper	<p>The Shipper generates and submits the Shipper Estimate Read Request. The key data elements of the request will include;</p> <ul style="list-style-type: none"> ⇒ GPRN (M) ⇒ Taken Date (M) – for the estimated read <p>The mandatory fields are indicated by (M) above.</p>	M1101RQ from Shipper
2 and 3	Transporter	<p>The Transporter will receive the Shipper Estimate Read Request and validate against validation rules (see section 4.1 for validation criteria).</p>	
4	Transporter	<p>A Shipper Estimate Read Request Rejection message will be sent to the Shipper if the request fails to meet the validation requirements.</p> <p>The rejection message will indicate why the Shipper Estimate Read Request is invalid.</p>	M1102RJ to Shipper
5	Shipper	<p>The Shipper will receive the Shipper Estimate Read Request Rejection market message. The message will include why the Shipper Estimate Read Request market message is invalid.</p>	M1102RJ from Transporter

Market Process Definitions

6	Transporter	The Shipper Estimate Read Request will be processed; the estimated read information will be generated and recorded on the Transport Systems once the validation requirements are met.	
7	Transporter	The market message for Estimated Meter Read Information will be generated and sent to the Shipper.	M1103N to Shipper
8	Shipper	<p>The Shipper will receive the Estimated Meter Read Information message. Estimated Meter Read Information market message will include the following key data elements;</p> <ul style="list-style-type: none"> ⇒ GPRN (M) ⇒ Read Taken Date (M) ⇒ Order of Read Number (M) ⇒ Meter No (M) ⇒ Meter Sequence Number (M) ⇒ Meter Type (M) ⇒ Volume-Corrected (M) ⇒ Read Type (M) ⇒ Preceding Index (M) ⇒ Volume Index (M) ⇒ Meter Head Index (O) ⇒ Uncorrected Index (O) ⇒ Consumption (Units) (M) ⇒ Consumption (kWh) (M) ⇒ Conversion Factor (M) 	M1103N from Transporter

Market Process Definitions

		<ul style="list-style-type: none">⇒ Average Calorific Value (M)⇒ Metric/Imperial Conversion Factor (M)⇒ CV Zone Correction Factor (M)⇒ GPRN Correction Factor (M)⇒ Supply Point Capacity (M)⇒ GPRN Annual Quantity (M)⇒ Consumption Band (M)⇒ A-Factor (M)⇒ B-Factor(M) <p>The mandatory and optional fields are indicated by (M) and (O) respectively.</p>	
--	--	---	--

4 Supplementary Information

4.1 Validation Rules

The following validation criteria, which are subject to change based on GMARG discussions (as per Meter Read Validation Procedure in section 3.4 of the MDS Procedures document), will apply for the Shipper Estimate Read Request:

- ⇒ The code in “Shipper ID” field is valid.
- ⇒ The code in “GPRN” field is valid.
- ⇒ There is a Meter at the GPRN.
- ⇒ The meter point is not locked or disconnected.
- ⇒ The GPRN is assigned to the requesting shipper.
- ⇒ The date in the “Taken Date” field is a valid date format.
- ⇒ Taken Date is not in the future.
- ⇒ The Taken Date is within a maximum number of days from today.
- ⇒ The Taken Date is not earlier than previous read.
- ⇒ A Meter Read does not exist for the Taken Date.

Market Process Definitions

4.2 Key Notes

- ⇒ The Transporter will generate an estimated read for the NDM Gas Point in accordance with the FAR Procedures as set out in the Code of Operations.
- ⇒ The Shipper can request an NDM Estimated Read per single GPRN per message at a time.
- ⇒ An NDM Estimated Read can be requested for a taken date that is in the past (within a maximum number of days of today) but cannot be in the future.
- ⇒ There is a significant workload on Transport Systems to calculate the NDM Estimated Read for each request. Number of Requests from Shippers should not be greater than 250 per month per Shipper.
- ⇒ Estimated Read Information message (M1103N) will be sent to the Shipper separately to the Meter Read Information market message(M803N or M804N) as described in *MPD8 – Meter Read Information Market Process* documentation.