

Gas MaP Project

MPD22 – Site Works Invoicing

Version 3.0

Approved

3rd November 2008

Market Process Definitions

Table of Contents

Table of Contents.....	ii
Revision History	ii
1. Introduction.....	3
1.1 Scope	3
1.2 History of Changes	3
2 Market Process Map.....	4
3 Market Process Description.....	5
4 Supplementary Information.....	6
4.1 Key Notes	6

Revision History		
Version	Date	Revision Description
2.0	26/10/2006	Base-lined on the basis of CER approval on 15/09/2006
2.9	16/09/2008	Draft for approval – baselining for go-live
3.0	03/11/2008	Base-lined on the basis of CER Approval on 17/10/2008.

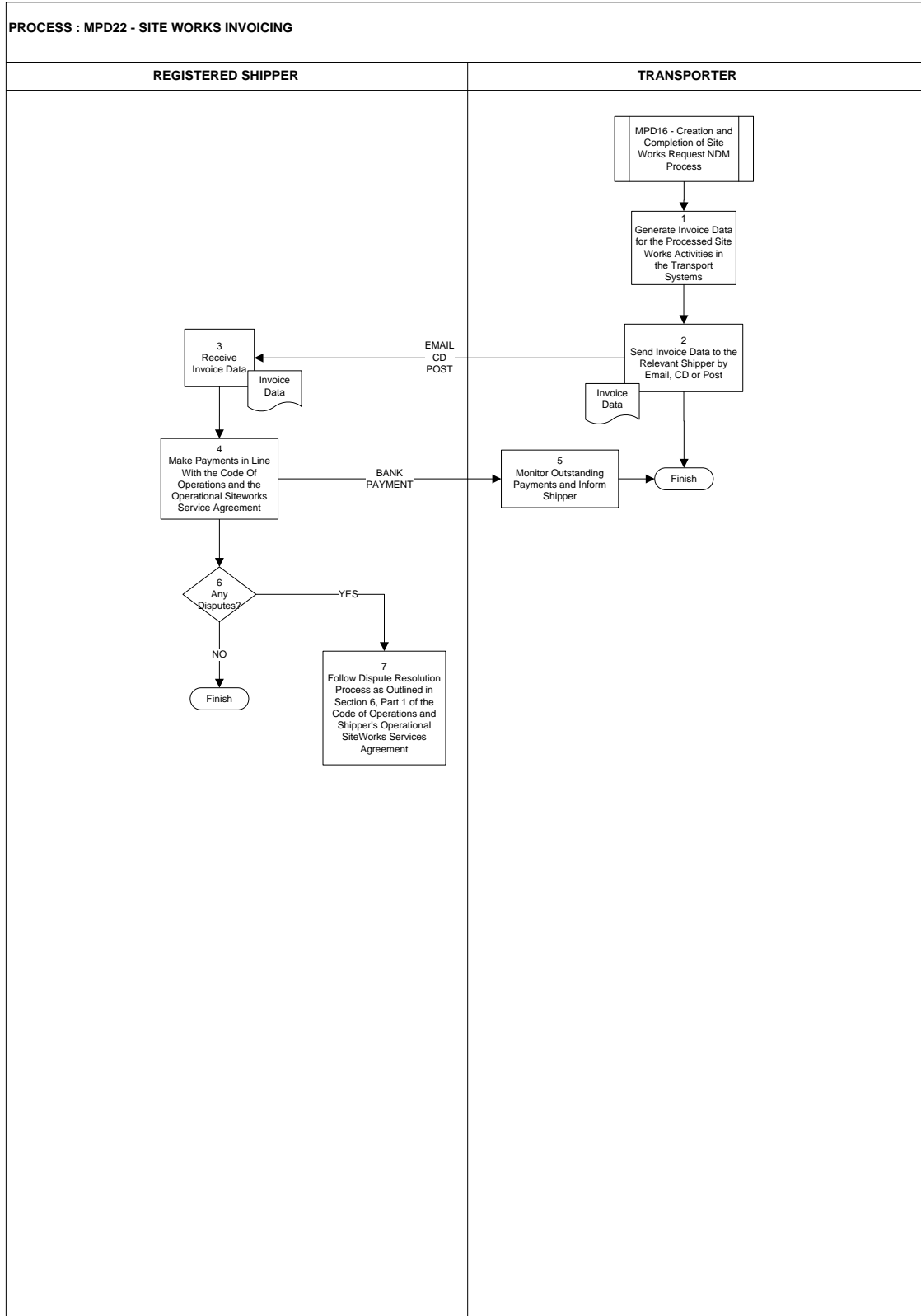
1. Introduction

1.1 Scope

This process covers the issuance of invoices for chargeable Operational Site Works activities to Shippers.

1.2 History of Changes	
Source of Changes	Description of Change
CR021	Baselined for go-live and changes made in line with Change Request 021

2 Market Process Map



Market Process Definitions

3 Market Process Description			
Step	Role	Actions	Interfaces
1, 2	Transporter	<p>The Transporter generates invoice data for processed Operational Site Works activities in the Transport Systems.</p> <p>The invoice data is sent to Shippers by email, CD or Post per each chargeable Site Works request.</p>	E-Mail / CD / Post to Shipper
4	Shipper	<p>The Shipper receives the invoice data and makes payment in line with the Code of Operations and the Operational Siteworks Service Agreement.</p>	E-Mail / CD / Post From Transporter
5	Transporter	<p>The Transporter monitors the receipt of payments and notifies the Shipper if any payments are not received.</p>	
6, 7	Shipper	<p>If the Shipper wishes to dispute any invoices, the dispute resolution process (as outlined in Section 6, Part 1 of the Code of Operations and the Shipper's Operational SiteWorks Services Agreement) is followed.</p>	

4 Supplementary Information

4.1 Key Notes

- ⇒ Invoice Data will be sent to Shippers by E-Mail, CD or Post.
- ⇒ Shippers will make payment upon receipt of the Invoice Data and may raise a dispute later in line with Section 6, Part 1 of the Code of Operations and the Operational Siteworks Service Agreement.