

Gas MaP Project

MPD23 – Creation and Maintenance of Gas Point Address

Version 3.0

Approved

3rd November 2008

Market Process Definitions

Table of Contents

Table of Contents.....	ii
Revision History	ii
1. Introduction.....	3
1.1 Scope	3
1.2 History of Changes	3
2 Market Process Map.....	4
3 Market Process Description.....	5
4 Supplementary Information.....	8
4.1 Key Notes	8

Revision History		
Version	Date	Revision Description
2.0	26/10/2006	Base-lined on the basis of CER approval on 15/09/2006
2.9	16/09/2008	Draft for approval – baselining for go-live
3.0	03/11/2008	Base-lined on the basis of CER approval on 17/10/2008

1. Introduction

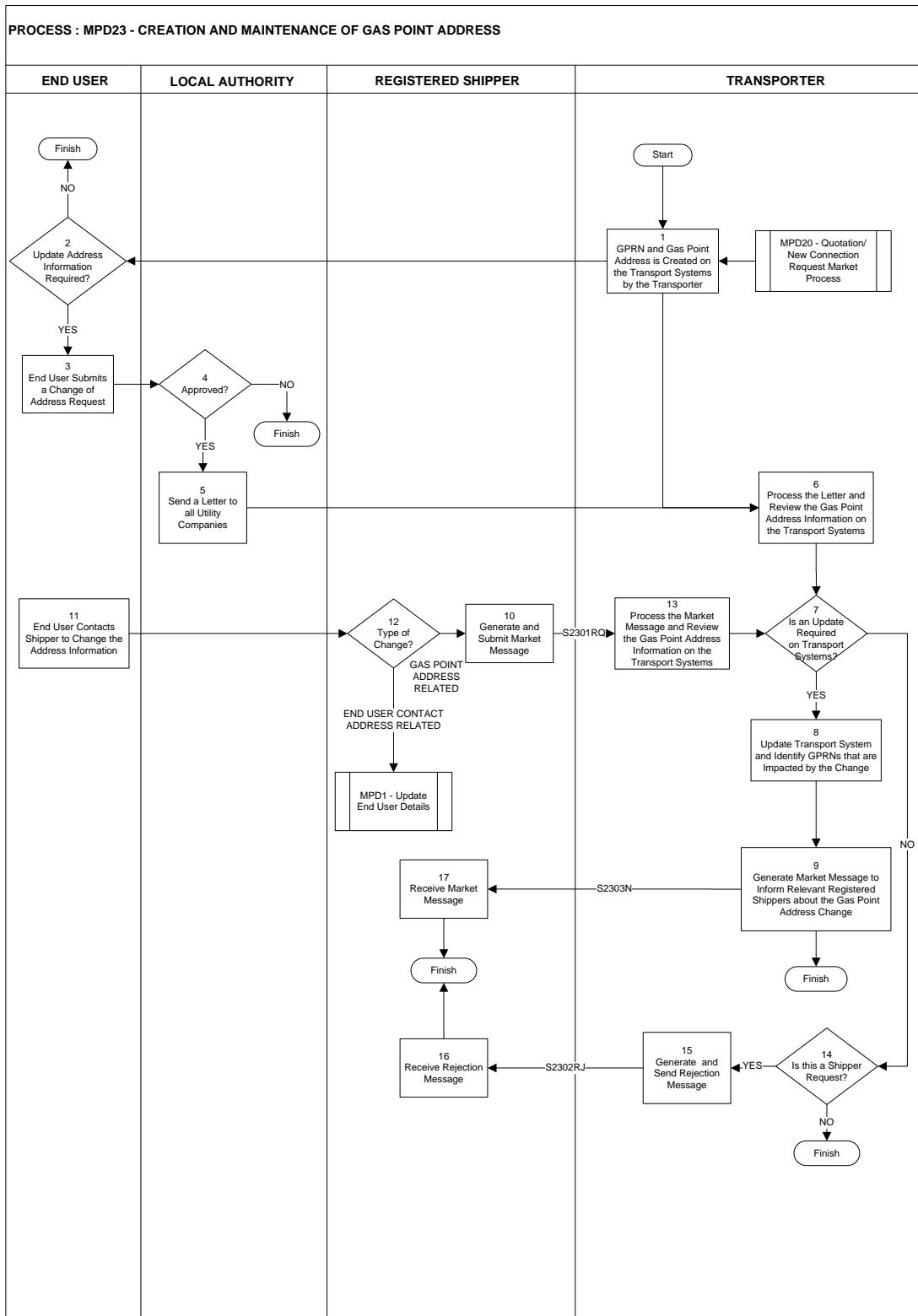
1.1 Scope

This document covers the Creation and Maintenance of Gas Point Addresses. Creation of a Gas Point Address is an internal exercise for the Transporter but requests for updates to Gas Point Addresses may come from an End User via their Local Authority or Shipper.

1.2 History of Changes	
Source of Changes	Description of Change
GMARG on 21 st Sept 2006	Additional 'Post Code' field added to 'Gas Point Address' data set.
CR021	Baselined for go-live and changes made in line with Change Request 021

Market Process Definitions

2 Market Process Map



Market Process Definitions

3 Market Process Description			
Step	Role	Actions	Interfaces
1	Transporter	Arising from <i>MDP20 – Quotation / New Connection Request Process</i> the Transporter creates GPRN and Gas Point Address Information on the Transport Systems.	
2, 4	End User	If the End User requires a change to their Gas Point Address details, a change of address request must be submitted to the Local Authority.	
4, 5	Local Authority	If the Local Authority approves the change of address request, a letter is sent to all Utility Companies.	
11	End User	The End User contacts the Shipper to change some aspect of their Gas Point Address Information.	
12, and 10	Shipper	The Shipper receives the request from the End User. If the change to the End User's address requires an update on the End User contact details, then the Shipper initiates <i>MPD1 – Update End User Details Market Process</i> .	
		If the change to the End User's address requires	S2301RQ to

Market Process Definitions

		<p>an update to the Gas Point Address Information, an Update Request for Maintenance of Gas Point Address market message is sent to the Transporter.</p> <p>The key data elements of the message will include:</p> <ul style="list-style-type: none"> ⇒ GPRN (M) ⇒ Gas Point Address Details (O) ⇒ Meter Location (O) ⇒ Reason for the Update Request (M) 	Transporter
6 to 9 and 13	Transporter	<p>The Transporter processes the letter from the Local Authority or the Market Message (S2301RQ) received from the Shipper and reviews the Gas Point Address Information on the Transport Systems. The Transport Systems are updated, if applicable, and Notification for Maintenance of Gas Point Address Update market message is generated and sent to the Shipper.</p> <p>The key data elements of the message will include:</p> <ul style="list-style-type: none"> ⇒ GPRN (M) ⇒ Gas Point Address Details (M) ⇒ Meter Location (M) 	S2303N to Shipper
17	Shipper	<p>The Shipper receives the Notification for Maintenance of Gas Point Address Update market message from the Transporter.</p>	S2303N from Transporter

Market Process Definitions

14 and 15		<p>If the Transporter decides not to process the update request, the Transporter sends a rejection message to the Shipper.</p> <p>The message will include the rationale why the update request for the gas point address market message is invalid.</p>	S2302RJ to Shipper
16	Shipper	The Shipper receives the rejection message from the Transporter.	S2302RJ from Transporter

4 Supplementary Information

4.1 Key Notes

⇒ The following address structure is used for Gas Point Addresses in Transport Systems:

- House/Unit No
- House Letter
- House/Unit Name
- Street Name
- Town
- Area
- Post Code
- County