

MPD30 – Gas Debt on Prepayment Meter (PPM)

Version 0.2
Draft for Consultation
29th August 2012

Market Process Definitions

1. Table of Contents

1.	Table of Contents	2
2.	Revision History	2
1.	Introduction	3
1.1	Scope.....	3
1.2	History of Changes	3
2	Market Process Map.....	4
3	Market Process Description	5
4	Supplementary Information.....	6

2. Revision History		
Version	Date	Revision Description
0.1	17/08/12	First Draft for Consultation
0.2	29/08/12	Revised Draft.

Market Process Definitions

1. Introduction

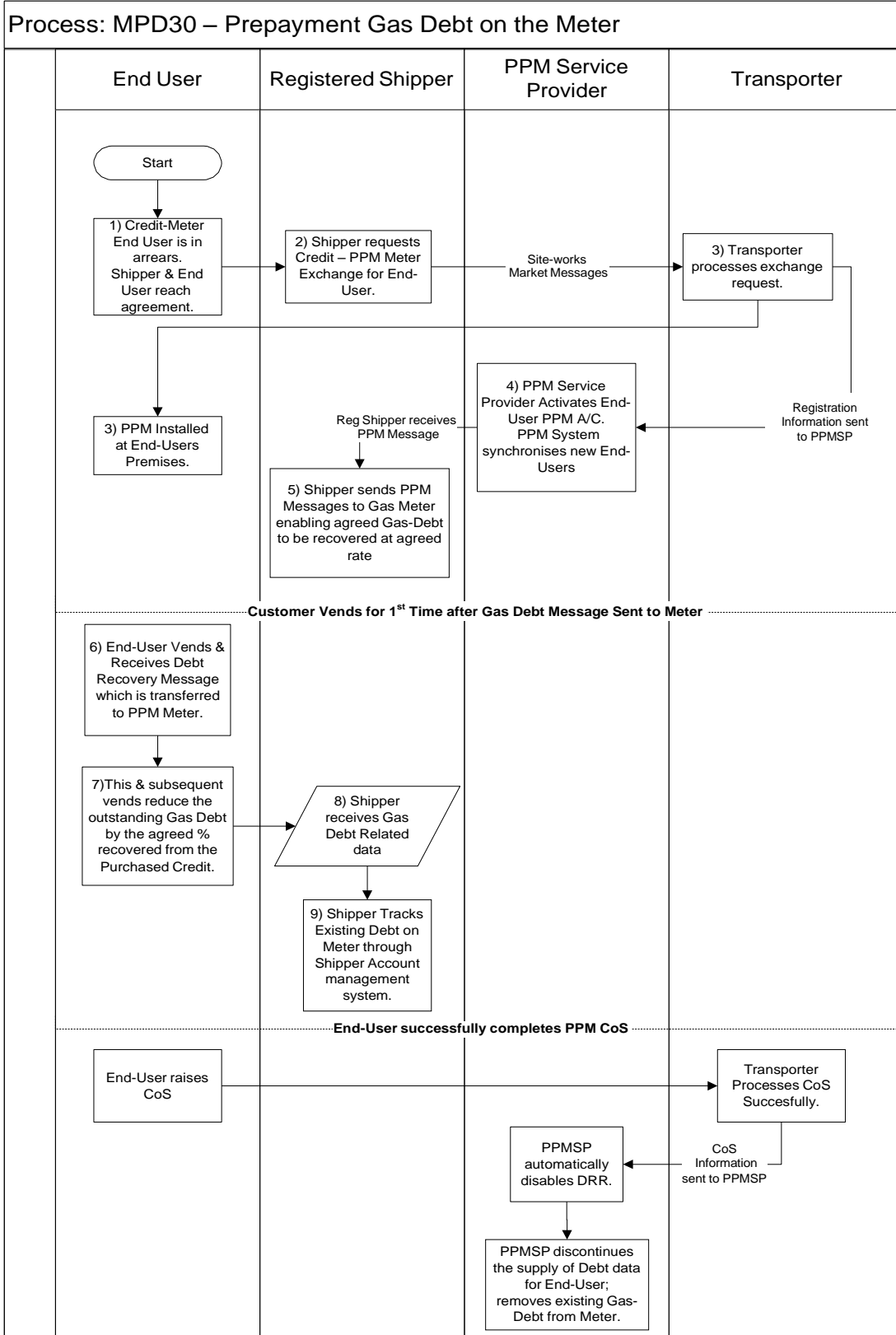
1.1 Scope

This process is the Prepayment Metering Gas Debt process. It is applicable to NDM Prepayment Metering Supply Points only.

1.2 History of Changes	
Source of Changes	Description of Change

Market Process Definitions

2 Market Process Map



Market Process Definitions

3 Market Process Description			
Step	Role	Actions	Interfaces
1	End User	End User, after accruing debt on Gas Credit Meter, agrees with Registered Shipper to install a Prepayment Meter (PPM) to manage existing Gas Debt and stop debt accruing further. Shipper and End-User also agree <i>Debt Valuation & Gas Debt Recovery Rate</i> to be implemented on the meter.	Shipper/End User Agreement
2, 3	Transporter	Shipper Requests Credit-PPM Exchange on behalf of End User. Transporter processes the exchange request & informs PPM Service Provider (PPMSP) of new PPM account as per MPD 16.	S1601-1604 Market Messages
4	PPMSP	PPMSP activates the End User's A/C, sending activation data to the End User's gas card. PPMSP receives Acknowledgement from PPM Meter and synchronizes the data records with all stakeholders as per MPD 31.	PPMSP/Token
5	Registered Shipper	Shipper creates Gas Debt Adjustment (GDT) EUSI with <i>Gas Debt Value & Gas Debt Recovery Rate</i> equal to the agreed values. EUSI is sent via PPMSP Back-Office to the End User's meter.	PPMSP/Token
6	End-User	End User vends for the 1 st time after EUSI is generated. Once gas card is subsequently inserted into meter, the Gas Debt & DRR are applied to meter. The amount of credit available for vend is	Meter

Market Process Definitions

		reduced by DRR%. The Gas Debt on the meter is also reduced by DRR% of the vend amount.	
7	PPM Service Provider	PPM Service Provides Gas Debt Related data, received from PPM Meter, to registered shipper.	PPMSP/Shipper
8	Shipper	Shipper retains End Users Gas Debt data for account management and billing purposes.	Shipper
9	PPM Service Provider	After a PPM customer completes a Change of Shipper, the PPMSP will automatically set DRR = 0. The Gas Debt data will no longer be supplied to the End-Users Registered Shipper. Gas Debt value will be automatically cleared from the PPM Meter.	

4 Supplementary Information

4.1 Key Notes

- ⇒ Time-Based Debt Recovery will not be utilised
 - Weekly Min Gas Debt will be set = 0
 - Weekly Max Gas Debt will be set = 0
- ⇒ The Debt Recovery Rate will be limited to a maximum value of 25%
 - Thus the End User will have access to at least 75% of credit to consume gas or repay Emergency Credit
 - Gas Allocation Rate will be set at 25%, ensuring Emergency Credit can be repaid in a timely manner by the end-user
- ⇒ PPM CoS process as per MPD08
- ⇒ Upon Completion of PPM CoS, PPM Back-Office Service will disable the Debt Recovery Functionality
 - Incoming Shippers will not receive Gas Debt Records (SI12) for customers post PPM CoS, as they will not require the Gas Debt information
- ⇒ Gas Debt Recovery will have no material impact upon the customers vending transactions as outlined in MPD 31