

PPM Project

**MPD31 – Prepayment Vending
Transaction**

Version 3.0

Approved

3rd November 2008

Market Process Definitions

1. Table of Contents

1.	Table of Contents	2
2.	Revision History	2
1.	Introduction	3
1.1	Scope	3
1.2	History of Changes	3
2	Market Process Map	4
3	Market Process Description	5
4	Supplementary Information	10
4.1	Key Notes	10

2. Revision History

Version	Date	Revision Description
1.0	06/06/07	First Draft for Consultation
1.1	10/08/07	Draft for Approval
2.0	19/02/08	Draft for Approval
2.9	16/09/2008	Draft for approval – baselining for go-live
3.0	03/11/2008	Base-lined on the basis of CER approval on 17/10/2008

1. Introduction

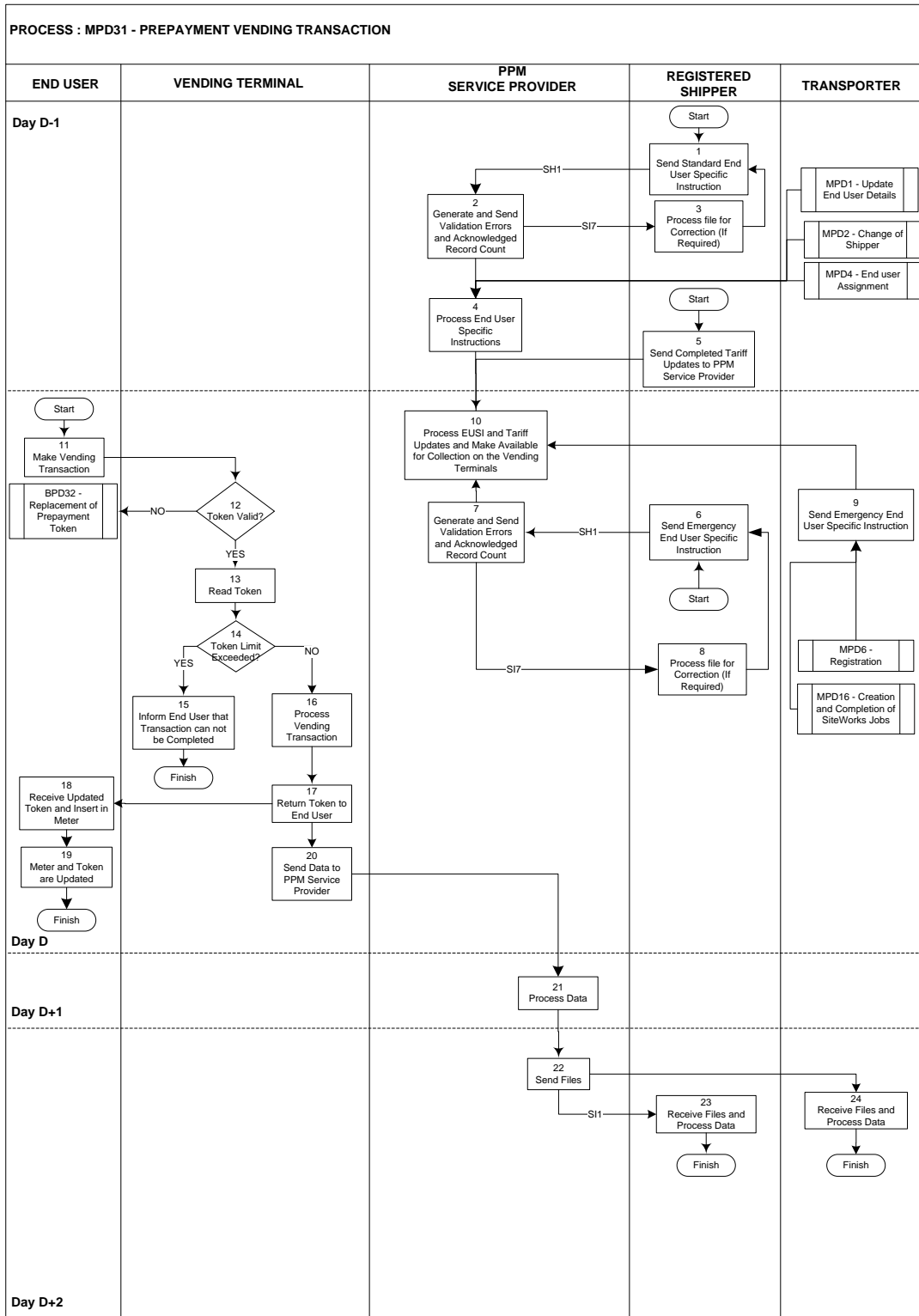
1.1 Scope

This process is the Prepayment Metering Vending transaction process. It is applicable to NDM Prepayment Metering Supply Points only.

1.2 History of Changes	
Source of Changes	Description of Change
Finalised PPM Design	Agreed process design with the PPM Service Provider
CR021	Baselined for go-live and changes made in line with Change Request 021

Market Process Definitions

2 Market Process Map



Market Process Definitions

3 Market Process Description			
Step	Role	Actions	Interfaces
1	Registered Shipper	The Registered Shipper sends a Standard End User Specific Instruction (SH1 File) to the PPM Service Provider. For each valid SH1 record the PPM Service Provider will generate an EUSI.	SH1 File to PPM Service Provider
2	PPM Service Provider	The PPM Service Provider validates the SH1 file and sends a corresponding SI7 file back to the Shipper containing the number of records successfully processed and details of any records that fail validation.	SI7 File to the Registered Shipper
3	Registered Shipper	The Registered Shipper receives the acknowledgement count and validation errors and acts according to resolve the errors.	SI7 File from PPM Service Provider
5	Registered Shipper	The Registered Shipper sends a complete Tariff Update template to the PPM Service Provider. The PPM Service Provider validates the template and, if it is valid, generates and processes a new regional data file based on the contents of the tariff update template.	
6	Registered Shipper	The Registered Shipper sends an Emergency End User Specific Instruction (SH1 file) to the PPM Service Provider. For each valid SH1	SH1 File to PPM Service Provider

Market Process Definitions

		record the PPM Service Provider will generate an EUSI.	
7	PPM Service Provider	The PPM Service Provider validates the SH1 file and sends a corresponding SI7 file back to the Shipper containing the number of records successfully processed and details of any records that fail validation.	SI7 File to the Registered Shipper
8	Registered Shipper	The Registered Shipper receives the acknowledgement count and validation errors and acts according to resolve the errors.	SI7 File from PPM Service Provider
4 and 10	PPM Service Provider	<p>The PPM Service Provider processes End User Specific Instructions and makes them available for collection on the vending outlets. Standard Instructions are processed as part of the overnight process. Emergency Instructions are processed within 30 minutes of receipt.</p> <p>The Transporter sends a Standard End User Specific Instruction to the PPM Service Provider as defined in the following Market Process Definitions – Please refer to the relevant documentation for more information.</p> <ul style="list-style-type: none"> ▪ MPD1 - Update End User Details ▪ MPD2 - CoS & CoS Cancellation ▪ MPD4 - End User Assignment <p>The Transporter sends an Emergency End User Specific Instruction to the PPM Service Provider</p>	

Market Process Definitions

		<p>as defined in the following Market Process Definitions – Please refer to the relevant documentation for more information.</p> <ul style="list-style-type: none"> ▪ MPD6 - Registration ▪ MPD16 - Creation and Completion of Site Works Requests 	
11	End User	<p>The End User makes a vending transaction. The retail agent inserts the token into vending terminal.</p>	Token / Terminal
12	Vending Terminal	<p>The Vending Terminal validates the token.</p> <p>If validation fails (e.g. the token is blank and has not yet been inserted into the meter) then the vending terminal rejects the token. The End User may have to return the token to the meter or get a replacement.</p> <p>Please refer to <i>MPD32 – Replacement of Prepayment Token Market Process</i> for more information.</p>	Token / Terminal
13	Vending Terminal	<p>If the token is valid then the following data is read from the token;</p> <ul style="list-style-type: none"> ▪ Token Credit Information ▪ Meter Read Information ▪ Meter Diagnostics information (where applicable) ▪ Acknowledgements to any previously applied EUSIs (where applicable). 	

Market Process Definitions

14 and 15	Vending Terminal	If the current vend would cause the Maximum Credit on Token Limit to be exceeded then the payment will be rejected and End User will be informed by the Vending Outlet Agent.	
16 and 17	Vending Terminal	The vending transaction is processed, token is updated. The Vending Agent returns the token to the End User.	
18 and 19	End User	The End User inserts the token into the Meter. The meter reads the token and applies the credit and EUSIs to the meter. The meter then writes the following data to the token; <ul style="list-style-type: none"> ▪ Token Credit Information ▪ Meter Read Information ▪ Meter Diagnostics information (where applicable) ▪ Acknowledgements to EUSIs (where applicable). 	
20	Vending Terminal	The Vending Terminal transfers the data to PPM Service Provider.	
21 and 22	PPM Service Provider	The PPM Service Provider processes the data and sends to the Shipper and the Transporter.	

Market Process Definitions

23	Registered Shipper	The Registered Shipper receives and processes the files and takes necessary actions. S11 File will include the acknowledgement details of the SH1 File. The acknowledgement is written to the card on insertion to the meter and transferred back to PPM Service Provider at subsequent vend.	S11 File to Shipper
24	Transporter	The Transporter receives and processes the files and takes necessary actions.	

4 Supplementary Information

4.1 Key Notes

⇒ Please refer to the following documentation that provides details of the support and management service level agreements for the provision of the Prepayment Metering Services from PPM Front Office and PPM Back Office Service Providers.

- PPM Front Office Service Provider
 - Service Procedures for Prepayment Metering Service Provision for Shippers
- PPM Back Office Service Provider
 - Service Procedures for Prepaid Metering Service Provision for Shippers