

Gas MaP Project

MPD3 - Request for I/C Historical Consumption Data NDM

Version 4.0

CRU Approved

19th September 2019

Market Process Definitions

1. Table of Contents

1.	Table of Contents	2
2.	Revision History	2
3.	Introduction	3
3.1	Scope	3
4.	Market Process Map	4
5.	Market Process Description	5
6.	Supplementary Information	8
6.1	Validation Rules	8
6.2	Key Notes	8

2. Revision History

Version	Date	Revision Description
2.0	26/10/2006	Base-lined on the basis of CER Approval on 15/09/2006.
2.9	15/09/2008	Draft for approval – baselining for go-live
3.0	03/11/2008	Base-lined on the basis of CER Approval on 17/10/2008 in line with CR021: Baselining MPDs and MMIG for go-live. All MPDs will have one consistent version number – v3.0
3.1	08/02/2019	Issued for GMARG comment following internal GNI review of all MPD’s to ensure alignment with current practice.
3.2	15/04/2019	Issued for CRU Approval
4.0	19/09/2019	CRU Approved at GMARG 19/09/2019.

3 Introduction

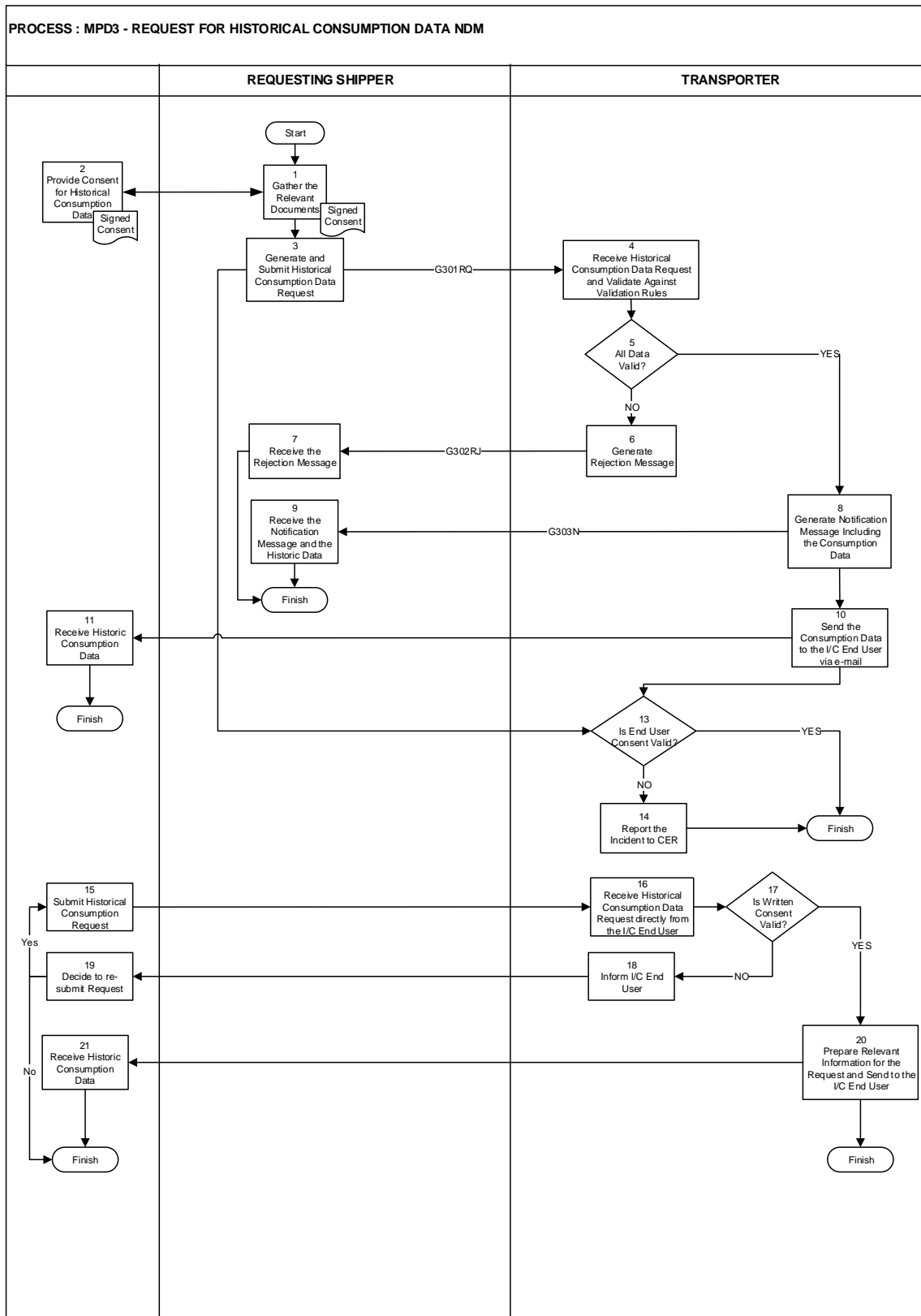
3.1 Scope

This process outlines the manner in which Shippers may request Historical Consumption Data for Industrial and Commercial NDM Supply Points.

For the avoidance of doubt, Historical Consumption data for residential NDM Supply Points is not available. This information is available from the End User's bill.

Market Process Definitions

4 Market Process Map



Market Process Definitions

5 Market Process Description			
Step	Role	Actions	Interfaces
1	Requesting Shipper	The Requesting Shipper will request End User Consent from the Industrial/Commercial (“I/C”) End User.	
2	End User	The I/C End User will provide consent to the Requesting Shipper for Historical Consumption Data.	
3	Requesting Shipper	<p>The Shipper will generate and submit a Historical Consumption Request.</p> <p>The key data elements of the request will include;</p> <ul style="list-style-type: none"> ⇒ GPRN ⇒ End User Consent ⇒ End User contact details <p>By default the Shipper will receive 24 months of Historical Consumption Information.</p>	G301RQ to Transporter
4	Transporter	The Transporter will receive the Historical Consumption Message.	
5		The request will be validated against the validation rules (See section 6.1)	
6		A Request for Historical Consumption Data Rejection message will be sent to the requesting Shipper if the Request fails to meet the validation criteria.	G302RJ to Shipper
7	Shipper	The Shipper will receive the rejection message.	
8	Transporter	<p>The notification message including the required Historical Consumption information will be sent to the End User. The Historical Consumption Data shall comprise of the following data items:</p> <ol style="list-style-type: none"> 1. Gas Point Registration Number; 2. Meter number; 	G303N to Shipper

Market Process Definitions

		<ul style="list-style-type: none"> 3. Consumption Band; 4. Connection type; 5. Annual Quantity (kWh); 6. Supply Point Capacity (kWh) for the current gas year for Distribution connected NDM Supply Points; 7. NDM Meter Read date; Meter Read Type and 8. Monthly Consumption data (kWh) for 24 months only. 	
9	Shipper	The Shipper will receive the notification message and the Historical Consumption information.	
10	Transporter	The Historic Consumption information will be sent to the End User via e-mail.	
11	End User	The Historic Consumption information will be received by the End User.	
13	Transporter	The Transporter will validate if the End User Consent is Valid.	
14	Transporter	<p>If there is any misuse of this process, the Transporter will inform the Commission.</p> <p>The Commission may determine that this facility should be withdrawn from any such Shipper(s).</p>	
15	End User	I/C End User will submit a request for Historical Consumption Data via e-mail or letter.	
16	Transporter	The Transporter receives the Historical Consumption Request directly from the I/C End User.	
17		The Transporter will validate if the End User details are correct.	

Market Process Definitions

18		The I/C End User will be informed if the Details are invalid.	
19	End User	The End User will decide if they will re-submit the request.	
20	Transporter	The Transporter will prepare the relevant information for the request and will send it to the I/C End User.	
21	End User	The End User will receive the Historical Consumption Information.	

6 Supplementary Information

6.1 Validation Rules

The following validation will be applied:

- ⇒ Verify the Gas Point specified is recorded on the GPR.
- ⇒ Validate that the GPRN submitted is an Industrial & Commercial GPRN.
- ⇒ Ensure that the Shipper has received End User Consent.

6.2 Key Notes

- ⇒ Validation will be processed sequentially. The validation rules provided (in 6.1 above) may not reflect the final sequential order.
- ⇒ End-Users or Energy Consultants working on their behalf may also manually request Historical Consumption directly from GPRO.