

Gas MaP Project

MPD4 - End User Assignment

Version 4.0
CRU Approved
19th September 2019

1. Table of Contents

1.	Table of Contents.....	2
2.	Revision History	2
3.	Introduction	3
3.1	Scope	3
4.	Market Process Map.....	4
5.	Market Process Description.....	5
6.	Supplementary Information	7
6.1	Validation Rules	7
6.2	Key Notes.....	7

2. Revision History

Version	Date	Revision Description
2.0	26/10/2006	Base-lined on the basis of CER approval on 15/09/2006.
2.1	19/02/2008	Final Update for Prepayment Meters – Draft for Approval
2.9	16/09/2008	Draft for approval – baselining for go-live
3.0	03/11/2008	Base-lined on the basis of CER Approval on 17/10/2008 in line with CR021: Baselining MPDs and MMIG for go-live. All MPDs will have one consistent version number – V3.0
3.1	19/12/2018	Issued for GMARG comment following internal GNI review of all MPD’s to ensure alignment with current practice.
3.2	15/04/2019	Issued for Approval.
4.0	19/09/2019	CRU Approved at GMARG 19/09/2019.

3. Introduction

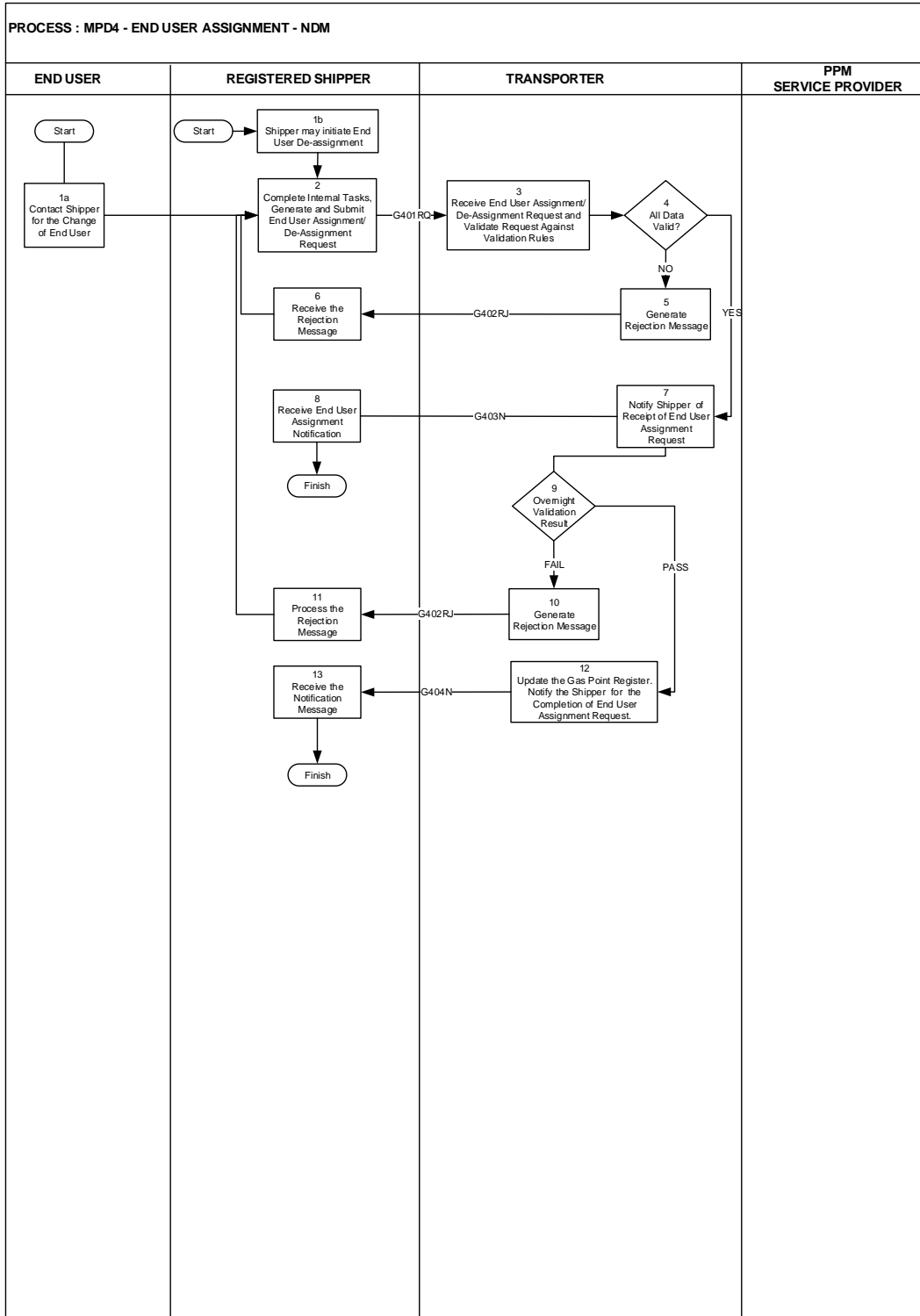
3.1 *Scope*

This process will be known as End User Assignment for NDM and will be applicable to NDM Supply Points. This process shall govern the assignment & de-assignment of an End User at a NDM Supply Point on the Gas Point Register.

The Shipper is required to inform the Transporter when an End User is to be assigned or De-assigned at the supply point.

Market Process Definitions

4. Market Process Map



5. Market Process Description			
Step	Role	Actions	Interfaces
1	End User	An End User initiates the 'End User Assignment' request. An End User or Shipper may initiate an 'End User De-Assignment' Request.	
2	Shipper	<p>The Shipper will need to determine the type of request. The Shipper completes the relevant tasks to gather End User Details.</p> <p>The Shipper will generate an Assignment or De-assignment request.</p> <p>The key data elements of the request will include;</p> <ul style="list-style-type: none"> ⇒ Assignment Option - Indicates either a new customer is to be assigned to that gas point, or allow the shipper to de-assign the customer with no new customer details required. ⇒ GPRN (M) ⇒ End User Name (M) ⇒ End User Contact Address ⇒ End User Contact Number Available? (M) – options are 'Yes' or 'No'. ⇒ End User Contact Details – Contact Phone Numbers – (M) if the End User Contact Number is Available. ⇒ End User Contact Method ⇒ Market Sector - Industrial/Commercial or Residential (M) ⇒ Vulnerable Customer & Type of Vulnerable Customer (M) ⇒ Meter Details (O) <p><u>All</u> of the End User key data provided will replace the current End User details once the mandatory data elements are provided. The mandatory fields are indicated by (M) above.</p>	G401RQ to Transporter

Market Process Definitions

3, 4	Transporter	The Transporter will receive the Assignment / De-Assignment Request and validate it against the validation rules (see Section 6.1).	
5		An End User Assignment / De-Assignment Request Rejection message will be sent to the Shipper if the request fails to meet the validation requirements. The rejection message will indicate why the End User Assignment Request is invalid.	G402RJ to Shipper
6	Shipper	The Shipper will receive the End User Rejection message.	
7	Transporter	Once the End User Assignment passes validation a provisional acceptance message will be sent to the Registered Shipper.	G403N to Shipper
8	Shipper	The Registered Shipper will receive the provisional acceptance message.	
9	Transporter	Over-night validation is run. Note the over-night validation conducts the same validation steps as outlined in Section 6.1.	
10		An End User Assignment Rejection message will be sent to the Registered Shipper if the End User Assignment Request fails to meet the re-validation requirements. The message will include the reason why the Request is invalid. The End User Assignment will not be recorded.	G402RJ to Shipper
11	Shipper	The Shipper will process the Rejection message.	
12	Transporter	The End User Assignment / De-Assignment Details for the NDM gas point will be recorded once the validation requirements are met. The effective date will be the date the request is received and validated. The Shipper will be notified of completion of the End User Assignment/De-Assignment Request after validation.	G404N to Shipper
13	Shipper	The Shipper will process the Notification message.	

6. Supplementary Information

6.1 Validation Rules

The following validation criteria will be applied:

- ⇒ The specified Gas Point is recorded on the GPR.
- ⇒ The GPRN is registered to the Shipper.
- ⇒ The Mandatory End User details are provided for the Assignment option including:
 - GPRN
 - End User Name
 - Contact Phone Number
 - Vulnerable Customer - if yes - Vulnerable Customer Type
 - Industrial/Commercial or Residential
- ⇒ The Vulnerable Customer Type is valid (if entered).
- ⇒ Ensure there is no Change of Shipper outstanding.

Meter Validation (Applies when Meter Details are provided)

- ⇒ The meter read will need to pass generic meter read validation checks – refer to the Meter Read Validation Procedure in section 3.4 of the MDS Procedures document.
- ⇒ The meter number received in the message matches the meter number of the gas point.
- ⇒ The NDM Meter Read is greater than or equal to the last physical (non-estimate) NDM Meter read.
- ⇒ The number of digits of the Read Index entered cannot be greater than the number of digits recorded on the GPR.

6.2 Key Notes

- ⇒ Updating the Gas Point Address will be dealt with in a separate process.

Market Process Definitions

- ⇒ Meter read/s is an optional field for the End User Assignment process.
- ⇒ Validation will be processed sequentially. The validation rules provided (in 6.1 above) may not reflect the final sequential order.
- ⇒ It is assumed that all Shippers in the NDM market will be asked to sign up to the same agreement with the PPM Service Provider.
- ⇒ It is assumed that End Users will be able to purchase replacement tokens from the PPMSP outlets.
- ⇒ Please refer to the following documentation that provides details of the support and management service level agreements for the provision of the Prepayment Metering Services from PPM Front Office and PPM Back Office Service Providers.
 - PPM Front Office Service Provider
 - Service Procedures for Prepayment Metering Service Provision for Shippers
 - PPM Back Office Service Provider
 - Service Procedures for Prepayment Metering Service Provision for Shippers
- ⇒ There is a slight risk that there may be a scheduled meter read on hold for validation in the Transporter system when an End User Assignment is due to complete and the G404N message is due to be sent to the Shipper. G404N messages can contain reads so rather than send reads to Shippers out of sequence, if the G404N contains a read, it will be held back until any reads on hold are sent to Shippers. The G404N would be sent automatically, immediately after the held read is released.