

Gas MaP Project

MPD7 - Deregistration

Version 4.0

CRU Approved

19th September 2019

Market Process Definitions

1. Table of Contents

1.	Table of Contents	2
2.	Revision History	2
3.	Introduction.....	3
3.1	Scope	3
4	Market Process Map	4
5	Market Process Description.....	5
6	Supplementary Information	7
6.1	Validation Rules.....	7
6.2	NDM Supply Point Status	7
6.3	Key Notes	8

2. Revision History

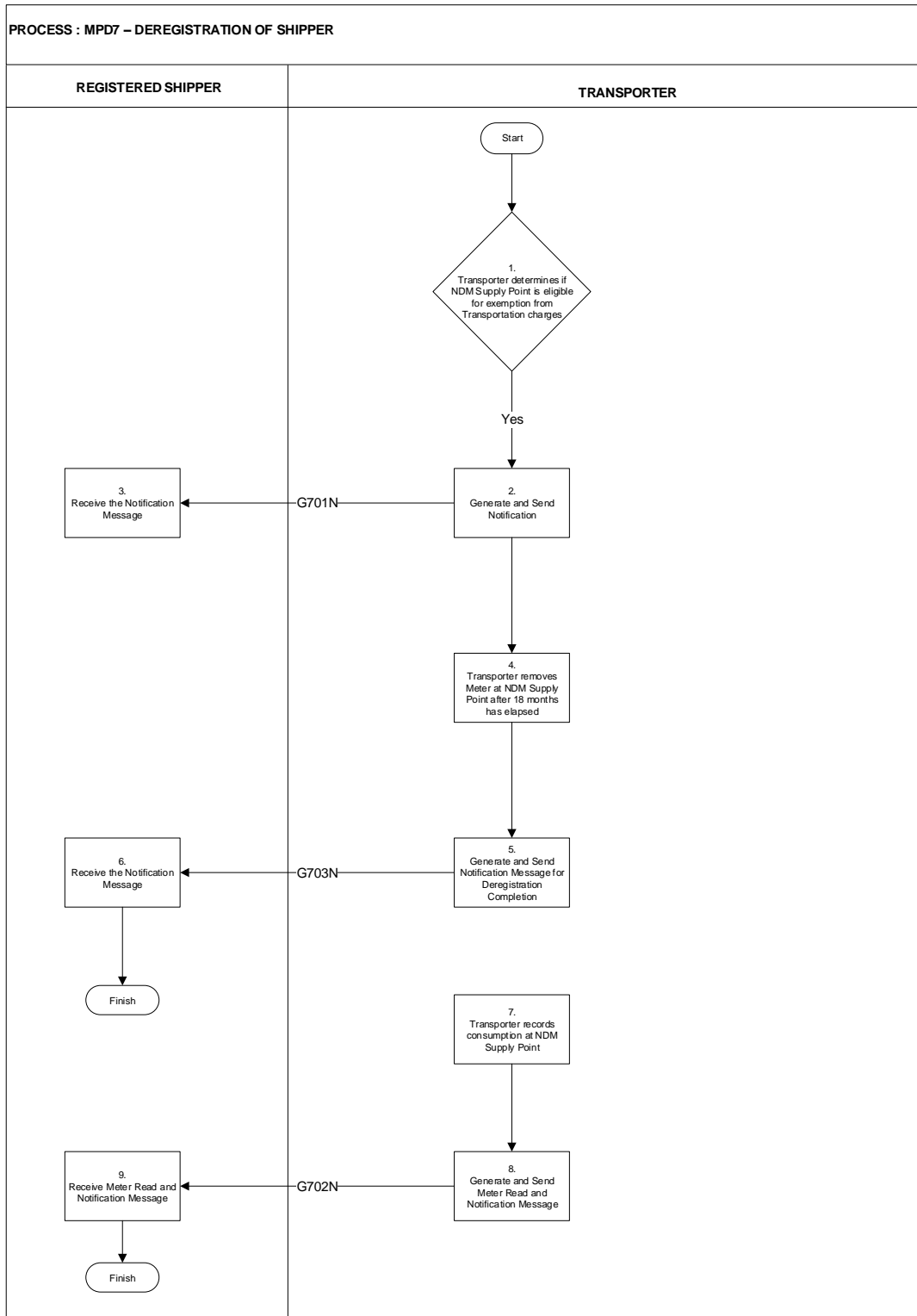
Version	Date	Revision Description
1.0	21/08/2006	Draft for Approval
2.0	28/11/2008	Update following CER approval for code Modification A031 – Deregistration and Revenue Protection Procedures
2.0	26/02/2009	Update following GMARG Consultation
3.1	30/10/2009	Minor changes to message names to simplify schema changes. Note Version set to 3.1 as go-live version baselined at 3.0.
3.2	19/02/2019	Issued for GMARG comment following internal GNI review of all MPD's to ensure alignment with current practice.
3.3	15/04/2019	Issued for CRU approval.
3.4	08/10/2019	Updated to reflect MCR 86 'Apply Tolerance to Deregistration Tariff Exemption' and approved by CRU at GMARG meeting 19/09/19

3. Introduction

3.1 *Scope*

This document outlines the process whereby the Transporter determines if an NDM Supply Point is eligible to become exempt from transportation charges and to be a Tariff Exempt NDM Supply Point. It also outlines the process whereby a Shipper ceases to be the Registered Shipper at a NDM Supply Points.

4 Market Process Map



Market Process Definitions

5 Market Process Description			
Step	Role	Actions	Interfaces
1	Transporter	The Transporter determines if an NDM Supply Point is eligible to qualify for exemption from Transportation charges and to be a Tariff exempt NDM Supply Point and validates it against the validation rules (See section 4.1 for validation criteria)	
2		If the NDM Supply Point meets the validation criteria a Message is generated and sent to the Registered Shipper. The Registered Shipper is notified that they are exempt from Transportation charges at the NDM Supply Point	G701N to Shipper
3	Shipper	The Registered Shipper receives notification that they are exempt from Transportation charges at the NDM Supply Point. This notification will include: the GPRN and the Effective Date of exemption from the Transportation charges at the NDM Supply Point	G701N from Transporter
4	Transporter	The Transporter will take reasonable steps to remove the Meter at the NDM Supply Point as soon as reasonably practicable 12 months following the Shipper-Requested Lock provided: <ul style="list-style-type: none"> a. There is no End User assigned to the NDM Supply Point; and b. There has been no consumption¹ at the NDM Supply Point 	
5	Transporter	The Shipper ceases to be recorded as the Registered Shipper at the NDM Supply Point on the Transport Systems on removal of the Meter at the NDM Supply Point or eighteen (18) months following the Shipper-Requested Lock provided: <ul style="list-style-type: none"> a) There is no End User assigned to the NDM Supply Point; and 	G703N to Shipper

¹ a tolerance of 10 units will be allowed such that the tariff exemption is maintained where the change in recorded consumption differs by no greater than 10 units relative to the lock read

Market Process Definitions

		<p>b) There has been no consumption¹ at the NDM Supply Point</p> <p>A Deregistration Completion Notification message will be generated and sent to the Shipper.</p> <p>The key data elements of the message will include:</p> <ul style="list-style-type: none"> ⇒ GPRN (M) ⇒ Deregistration Completion Status Details (M) <p>The mandatory fields are indicated by (M) above.</p>	
6	Shipper	The Shipper receives the Deregistration Completion Notification from the Transporter.	G703N from Transporter
7	Transporter	Consumption is recorded ¹ at the NDM Supply Point. The Transporter sends a notification to the Shipper that the NDM Supply Point is no longer exempt from Transportation Charges from the date that the consumption was detected.	G702N to Shipper
8	Shipper	The Shipper receives a notification from the Transporter that the NDM Supply Point is no longer exempt from Transportation Charges	G702N from Transporter

Market Process Definitions

6 Supplementary Information

6.1 Validation Rules

In order to determine if a NDM Supply Point is eligible to qualify for exemption from Transportation charges and to be a Tariff Exempt NDM Supply Point, the following validation criteria will apply

- ⇒ The GPRN is valid.
- ⇒ There is a meter at the GPRN.
- ⇒ GPRN is registered to the “Shipper ID”.
- ⇒ The specified Gas Point is recorded on the GPR.
- ⇒ There is no End User assigned to the NDM Supply Point on the GPR for at least one month.
- ⇒ Shipper requested Meter Locks have been in place on the GPRN in question for at least two months.
- ⇒ That Gas has not been off taken at the NDM Supply Point since the Shipper Requested Lock was completed (a tolerance of 10 units will be allowed such that the tariff exemption is maintained where the change in recorded consumption differs by no greater than 10 units relative to the lock read).
- ⇒ There are no outstanding requests by the Registered Shipper for Operational Site Works Services at the NDM Supply Point.

6.2 NDM Supply Point Status

- Registered – Eligible for Transportation charges 2 months from Lock
- Registered – Tariff Exempt from 2 – 18 months (No consumption)
- Registered – Tariff Applies as a result of consumption
- Deregistered – Meter Disconnected by Transporter
- Deregistered – Meter still on site after 18 months
- Registered to Incoming Shipper if COS Request has been processed successfully

Market Process Definitions

6.3 Key Notes

- ⇒ In advance of a NDM Supply Point being a Tariff Exempt NDM Supply Point, the Shipper will have requested that the Meter at the Gas Point be locked. The Meter must be locked two months in advance of a NDM Supply Point being a Tariff Exempt NDM Supply Point.
- ⇒ The End User must be de-assigned from the Gas Point for at least one month in advance of a NDM Supply Point being a Tariff Exempt NDM Supply Point.
- ⇒ The Change of Shipper (MPD2) and the Disconnect (MPD16) requests may also result in the Shipper being De-registered and exempt from Transportation Charges at the Gas Point.