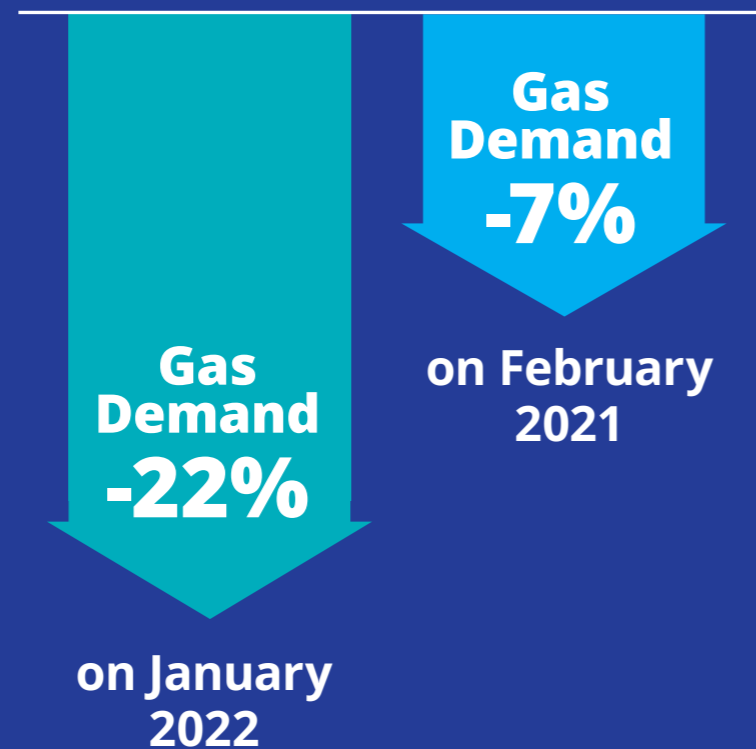


February 2022

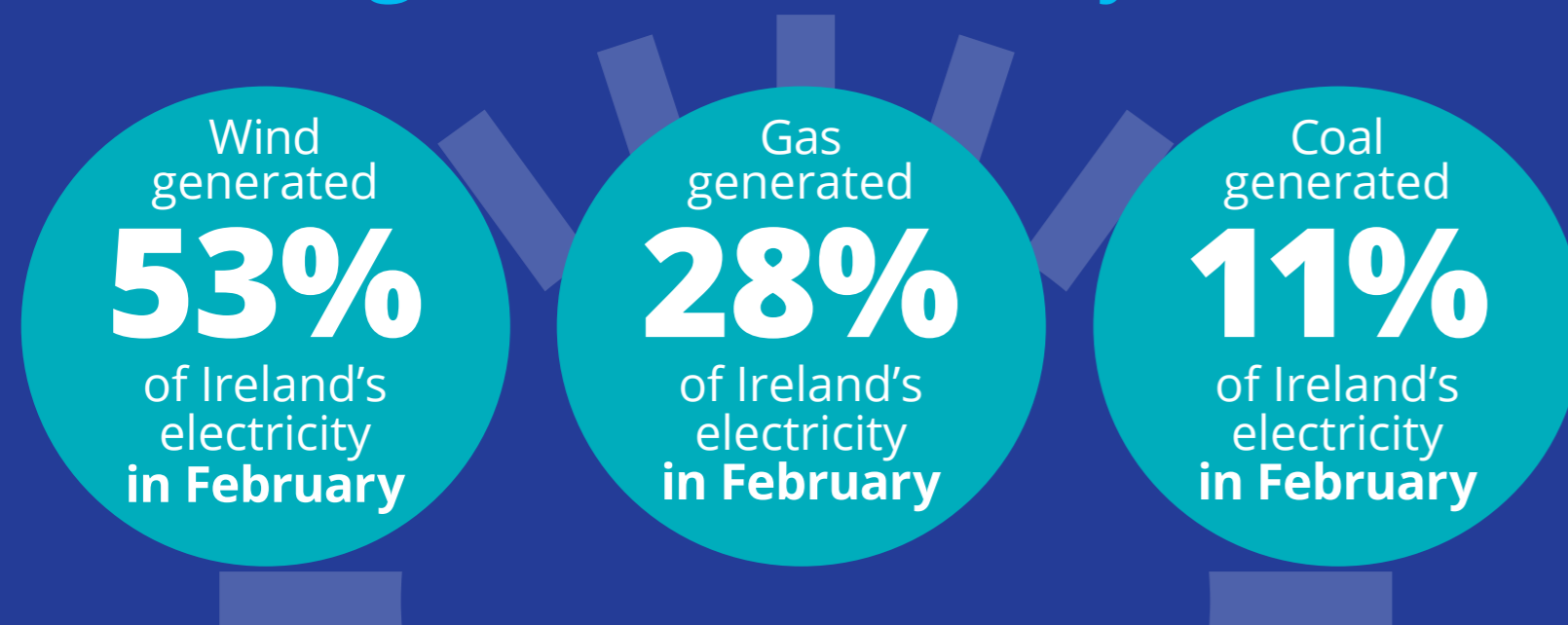
Gas demand

Gas demand **was down 22% on January** and **down 7% on the same period last year**.

A stormy and windy month led to wind energy generating over half of the country's electricity requirements – the highest contribution on record from wind.



Powering Ireland's electricity demand



Gas demand in key sectors

Gas demand increased on December figures across most commercial sectors.



A further easing of Covid-19 restrictions compared to the same time last year saw gas demand increase in the following sectors:



The range: highs and lows of electricity generation in February

Reliable and always on, gas continued to support and complement intermittent renewable electricity generation, ensuring a secure energy supply when wind generation dipped.

