

eight essential pipeline safety steps

Natural gas is transported around Ireland through an underground network of high pressure pipelines. To prevent these pipelines from being damaged and to keep them safe, certain activities are restricted in the “wayleave” – the strip of land above, and either side of, the pipeline. This document contains simple clear advice to help keep you and the pipeline safe.

- 1 Normal agricultural work including ploughing, tilling, subsoiling to a depth of 300mm does not require a permit.
- 2 Always contact Gas Networks Ireland before repairing or installing a new drainage system, clearing out existing ditches or open drains or undertaking any other kind of excavation work.
- 3 Call Gas Networks Ireland before installing gate posts and/or straining posts within the wayleave.
- 4 Ground cover should not be reduced or increased, or materials stored on the gas pipeline wayleave.

5 Pipelines are identified with marker posts at roads and property boundaries. Remember, gas marker posts can be accidentally damaged or moved and pipeline routes may change direction within any particular field. Do not assume that the pipeline runs in a straight line between posts.

6 Gas Networks Ireland should be contacted prior to planting trees in close proximity to the wayleave.

7 Please contact Gas Networks Ireland before undertaking forestry plantation and subsequent operations in or near the wayleave, such as drainage, construction of haul roads, harvesting, or cultivating.

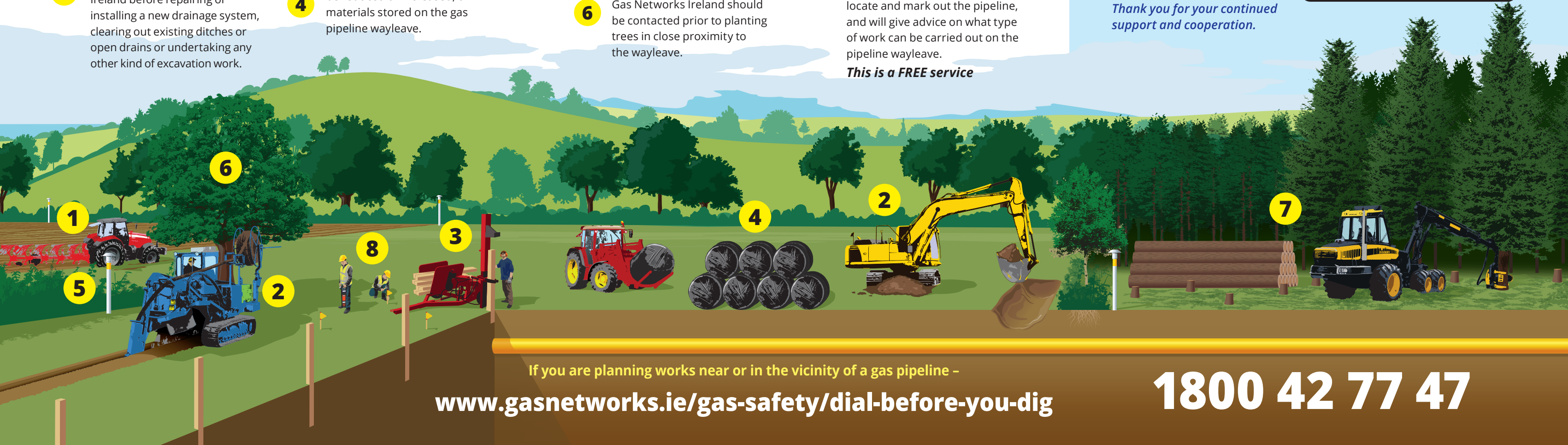
8 If necessary or requested, a Gas Networks Ireland representative will visit your property/site to locate and mark out the pipeline, and will give advice on what type of work can be carried out on the pipeline wayleave.

This is a FREE service

Don't take a chance – Dial Before You Dig

- Other than routine agricultural activities, **do not carry out** work in the vicinity of a pipeline wayleave without the prior consent of Gas Networks Ireland.
- Please give as much notice as possible, **ideally a minimum of 7 days**.
- We will check the location of the pipeline in the vicinity of the proposed works.
- We will send out maps on request and an engineer if required.
- **Advice is FREE**
- Please contact us to ensure your safety when carrying out maintenance and upgrading work on your property.

Thank you for your continued support and cooperation.



If you are planning works near or in the vicinity of a gas pipeline –

www.gasnetworks.ie/gas-safety/dial-before-you-dig

1800 42 77 47